

Mechanism of Vanadium Leaching during Surface Weathering of Basic Oxygen Furnace Steel Slag Blocks: A Microfocus X-ray Absorption Spectroscopy and Electron Microscopy Study

Andrew J. Hobson,[†] Douglas I. Stewart,[‡] Andrew W. Bray,[†] Robert J. G. Mortimer,[§] William M. Mayes,^{||} Michael Rogerson,^{||} and Ian T. Burke^{*,†}

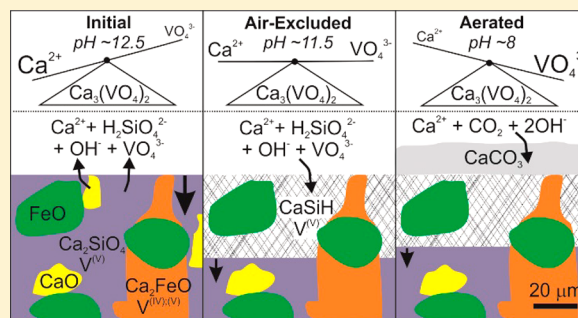
[†]School of Earth and Environment, and [‡]School of Civil Engineering, University of Leeds, Leeds, LS2 9JT, U.K.

[§]School of Animal, Rural and Environmental Sciences, Nottingham Trent University, Brackenhurst Campus, Southwell, Nottinghamshire NG25 0QF, U.K.

^{||}School of Environmental Sciences, University of Hull, Hull, HU6 7RX, U.K.

Supporting Information

ABSTRACT: Basic oxygen furnace (BOF) steelmaking slag is enriched in potentially toxic V which may become mobilized in high pH leachate during weathering. BOF slag was weathered under aerated and air-excluded conditions for 6 months prior to SEM/EDS and μ XANES analysis to determine V host phases and speciation in both primary and secondary phases. Leached blocks show development of an altered region in which free lime and dicalcium silicate phases were absent and Ca–Si–H was precipitated (CaCO_3 was also present under aerated conditions). μ XANES analyses show that V was released to solution as V(V) during dicalcium silicate dissolution and some V was incorporated into neo-formed Ca–Si–H. Higher V concentrations were observed in leachate under aerated conditions than in the air-excluded leaching experiment. Aqueous V concentrations were controlled by $\text{Ca}_3(\text{VO}_4)_2$ solubility, which demonstrate an inverse relationship between Ca and V concentrations. Under air-excluded conditions Ca concentrations were controlled by dicalcium silicate dissolution and Ca–Si–H precipitation, leading to relatively high Ca and correspondingly low V concentrations. Formation of CaCO_3 under aerated conditions provided a sink for aqueous Ca, allowing higher V concentrations limited by kinetic dissolution rates of dicalcium silicate. Thus, V release may be slowed by the precipitation of secondary phases in the altered region, improving the prospects for slag reuse.



INTRODUCTION

Basic oxygen furnace (BOF) steelmaking is a primary method of steelmaking which accounts for $\sim 2/3$ of worldwide steel production.^{1,2} In a basic oxygen converter low carbon steel is produced by blowing oxygen through molten pig iron and recycled scrap steel to remove carbon. BOF slag is the primary byproduct of BOF steelmaking and is produced when limestone (or dolomite) is added to the molten iron as a fluxing agent to draw out impurities.³ Because of the large quantities of steel slag produced worldwide (170–250 million metric ton/year⁴) reuse has become increasingly important in order to comply with environmental regulations limiting disposal of wastes. Currently steel slag that cannot be recycled in blast furnaces is primarily reused as aggregate in road surfacing and construction due to its high stability and skid resistance,^{5,6} while other uses include neutralization of acidity in soils or mine wastes and possibly for CO_2 sequestration.^{7–10} Depending on its precise mineralogy, some steel slag may be unsuitable for reuse, particularly in engineering applications. Steel slag may be enriched in phases such as free lime (CaO) and periclase (MgO) which expand on hydration, resulting in

significant volume change.¹¹ In situations where slag cannot be reused, or where supply exceeds after-use demand, slag is generally disposed to landfill.¹²

Steel slag formed during primary steelmaking (i.e., from BOF or electric arc furnace (EAF) processes) typically comprises a mixture of Ca oxides, Fe oxides, and silicates. The precise chemical composition varies by iron source and processing; however, the bulk chemical composition is relatively consistent between locations worldwide (Table 1). Typically BOF slag is dominated by Ca, Fe, and Si, with minor amounts of Mg, Mn, and Al.^{3,13,14} The mineralogical composition can be complex but typically contains a range of calcium-containing silicate phases (e.g., Larnite, $\beta\text{-Ca}_2\text{SiO}_4$; Merwinite $\text{Ca}_3\text{Mg}(\text{SiO}_4)_2$), calcium and aluminum ferrite phases (e.g., Brownmillerite, $\text{Ca}_2\text{FeAlO}_5$, Srebrodolskite, $\text{Ca}_2\text{Fe}_2\text{O}_5$), free Mg and Ca oxides (e.g., lime, CaO; periclase, MgO) and a refractory oxide solid

Received: February 16, 2017

Revised: May 11, 2017

Accepted: June 19, 2017

Published: June 19, 2017

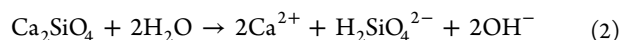
Table 1. Chemical Composition of BOF Steel Slags Including XRF Analysis of the Slag Used in This Study. Data Is Presented in Nominal Oxide Format^a

major elements nominal oxide wt %	Indiana, USA ³	Sweden ¹⁴	Taiwan, China ¹³	Yarborough UK this study <i>n</i> = 21
CaO	39	45	39	40 ± 5.4
FeO	30	22	38	32 ± 9.4
SiO ₂	12	11	7.8	14 ± 3.4
MgO	10	9.6	8.6	5.2 ± 1.1
MnO	2.7	3.1	4.2	4.5 ± 0.8
Al ₂ O ₃	2.2	1.9	1.0	1.2 ± 0.4
P ₂ O ₅	1.0	0.52	n.d.	1.3 ± 0.4
V ₂ O ₅	n.d.	2.6	n.d.	0.81 ± 0.24
TiO ₂	0.40	1.4	0.94	0.30 ± 0.13
Cr ₂ O ₃	0.20	0.07	n.d.	0.24 ± 0.13
SO ₃	0.12	n.d.	0.05	0.23 ± 0.09
TOTAL	97.6	97.2	99.6	98.7

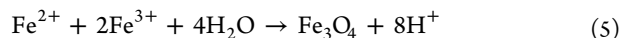
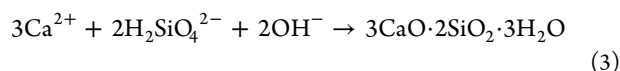
^aNotation: n.d., not determined; n, number of samples.

solution of Fe–Mg–Mn–Ca–oxides (e.g., Wüstite, FeO).^{3,11,15–17}

When stored in contact with water, CaO and Ca-silicates in BOF slag readily react to generate a high pH leachate (typically pH 10–12.5), for example, via eqs 1 and 2:^{18,19}



The release of Ca²⁺ and H₂SiO₄²⁻ to solution can lead to oversaturation with respect to calcium silicate hydrates (Ca–Si–H, eq 3), and secondary carbonates in the presence of atmospheric CO₂ (eq 4¹⁸). Spinel (e.g., magnetite, eq 5) and hydroxide phases can also form where di- and trivalent metal ions are released.²⁰



Steel slags usually contain a variety of trace elements from the primary ore that become concentrated by processing. At high pH, several potential toxic metals are solubilized and become mobile in leachate including Al, Fe, and V.^{18–21} In recent years V leaching has received significant attention due to its relative enrichment in BOF slag (0.04–1.48 wt %^{14,21}) and the potential mobility and toxicity of V(V) species in alkaline leachates. V is present in steel slag in multiple oxidation states (V(III), V(IV), and V(V)^{21,22}); however, there is uncertainty about the exact host phases and the V oxidation state within those phases, making evaluation of V leaching behavior difficult.²³ This uncertainty is compounded by the use of leaching data acquired from powdered specimens, which may be unrepresentative of slag aggregate weathering in civil engineering applications.^{8,20} As a result regulatory bodies, such as the UK Environment Agency, are adopting worst case scenario assumptions when considering V leaching from steel slags.²⁴ This will have an adverse effect on beneficial reuse of slag, and could lead to overly stringent long-term monitoring requirements for landfills.

Previous research has shown that under air-excluded leaching conditions up to 1.7% of the V in BOF slag was released to solution.²⁰ This is due to the relatively high reactivity of the V hosting phase, and the prediction that V(III) and V(IV) can be oxidized to V(V) during slag weathering.^{17,20,22} No data are available concerning leaching of steel slags under aerated conditions that will be more favorable to V oxidation. Equally, the role of secondary phase formation in controlling V release is currently unknown, although the potential for aqueous V to be incorporated into Ca–Si–H has been noted.²⁰

A thorough understanding of weathering processes in BOF slag is essential to enable long-term, cost-effective management and use of steel slag while protecting both the environment and human health from its potentially hazardous components. This study used scanning electron microscopy (SEM) and X-ray absorption near-edge spectroscopy (XANES) to determine the distribution and speciation of V within BOF steel slag, and to determine whether leachate equilibrium atmosphere affects V release during slag leaching. This research provides new insights into the distribution of V within both unweathered and weathered BOF slag, and investigates the mechanisms underpinning enhanced V leaching and its fate in neo-formed phases.

METHODS

Sample Collection and Characterization. Basic oxygen furnace (BOF) steel slag was collected in May 2013, within 1 week of its deposition, from British Steel's Yarborough Landfill (Scunthorpe, UK; LAT 53°35'22.24" LONG 0°35'41.52"). The sample consisted of 50–500 g blocks (~100 kg total). Subsamples were either cut into smaller 8 g blocks (20 mm × 10 mm × 10 mm) using a diamond saw for use in leaching experiments, or ground to <150 μm powder for compositional analysis. Major and minor element composition was determined using an Olympus X-5000 X-ray fluorescence (XRF) analyzer. Mineralogical analysis was performed using 50–100 mg samples mounted on silicon slides on a Bruker D8 X-ray diffractometer (XRD) using Cu Kα radiation and scanning between 2° and 70° 2θ.

Leaching Experiments. Two 8 g slag blocks were placed in a 2 L graduated glass screw-top bottle containing 2 L of deionized water (DIW). Air-excluded (O₂ and CO₂-free) conditions were established by purging for 45 min with N₂ gas before the bottle was capped and stored in a Coy anaerobic cabinet (95% N₂: 5% H₂, Coy Ltd. USA). Two further blocks were leached in water in a bottle stoppered with a foam bung and continually aerated with laboratory air using an aquarium pump. Leaching continued for 6 months before the blocks were removed from the bottles and dried under N₂/H₂ atmosphere in the Coy Cabinet. The leachate pH was determined following removal of the blocks using an Orion DualStar pH/ISE benchtop meter (Thermo Scientific, USA) with electrodes calibrated at pH 4, 7, and 10. Metal concentrations in aqueous leachate samples (0.2 μm; PTFE filtered) were determined (with an analytical uncertainty of < ± 3%) either on a Thermo iCAP 7400 radial ion-coupled plasma optical emission spectrometer (ThermoFisher Scientific, USA, ICP-OES; major elements), or on a Thermo iCAP Qc ion-coupled plasma mass spectrometer (ThermoFisher Scientific, USA, ICP-MS; minor elements).

Scanning Electron Microscopy. The leached blocks and an unleached control block were cut in half widthwise under water using a diamond saw and the resultant ~1 cm³ blocks were set into epoxy resin. The surface to be examined was then

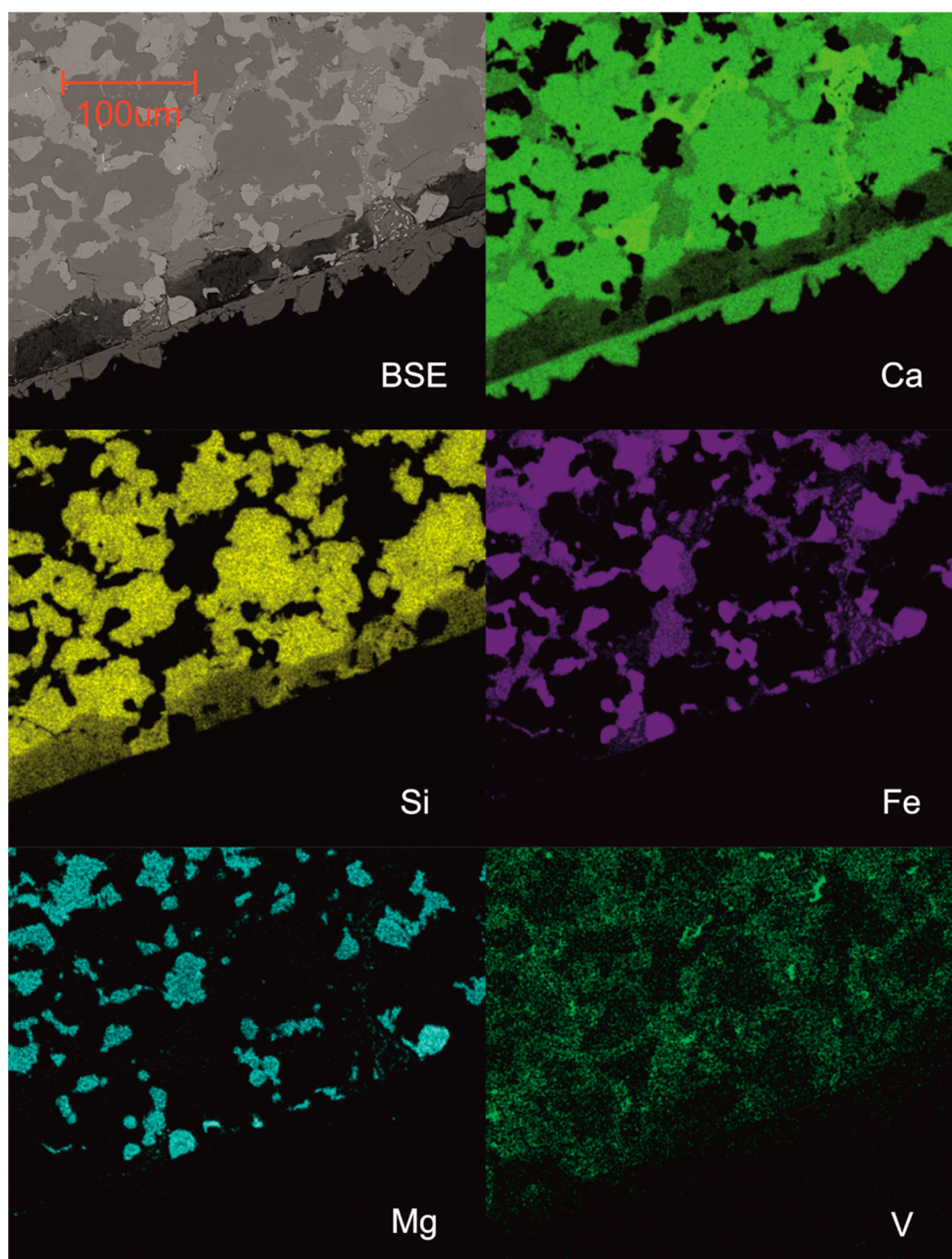


Figure 1. Slag surface structure after 6 months weathering under aerated conditions; backscatter electron image and false color EDS element maps.

polished using a water-free diamond paste to remove the top 1–2 mm of material potentially exposed to water during cutting. The samples were carbon coated (~ 10 nm) and backscatter electron images were collected on a FEI Quanta 650 FEGSEM environmental scanning electron microscope (SEM) equipped with an Oxford Instruments INCA 350 energy-dispersive X-ray spectroscopy system that had an 80 mm X-Max silicon drift detector. Energy-dispersive X-ray spectroscopy (EDS) mapping and quantitative point analysis were processed using the Oxford Instruments AZtec acquisition and analysis software (see [Supporting Information \(SI\)](#) section S1 for further details). False color SEM-EDS composite elemental maps were used to identify phases, and phase

composition was subsequently determined both near and remote from the leached surface of each slag block by point counting using randomly oriented $20 \times 20 \mu\text{m}$ grids;²⁵ (e.g., [SI](#) Figure S1a).

μX -ray Absorption Spectroscopy. Using the polished blocks described above, μX -ray analysis near edge structure (μXANES ; $\sim 2 \mu\text{m}$ resolution) spectra were collected at the V K-edge (5465 eV) on beamline I18, Diamond Light Source, UK in February 2016. Standard spectra were collected from a range of laboratory chemicals and aqueous solutions (1000 ppm). Multiple μXANES spectra were averaged to improve signal-to-noise ratio, normalized, and plotted using Athena v0.9.24²⁶ (see [SI](#) section S2 for detailed methodology).

RESULTS

Slag Composition. The elemental composition of the slag was dominated by Ca, Fe, and Si, with Mn and Mg as minor constituents; the V concentration was 0.45 ± 0.13 wt % (Table 1; SI Table S1). XRD analysis showed that the slag contained Larnite (dicalcium silicate; β -Ca₂SiO₄), brownmillerite (dicalcium aluminoferrite; Ca₂(Al, Fe)₂O₅), free lime (CaO), and wüstite (refractory oxide; FeO) (SI Figure S4).

SEM Microanalysis. SEM analysis showed that the center of slag blocks consists of an interlocking crystalline matrix (Figure 1). EDS mapping showed that each subregion within the matrix had relatively uniform composition and four different chemically discrete phases were identified. Quantitative EDS spot analyses (e.g., SI Figure S1b–e; SI Table S2) was used to further characterize these phases. The first phase had an average molar Ca/Si ratio of 2.2 ± 0.1 , corresponding to the dicalcium silicate phase identified by XRD; this phase also contained P, V, and trace Fe. The composition of the second phase was dominated by Ca, Al, and Fe suggesting that it is the dicalcium aluminoferrite phase identified by XRD; this phase also contained Mn, Ti, Mg, Cr, and V. EDS spot analysis indicated that the third phase was principally CaO, but this free lime phase was also substituted with Mn and Fe. The fourth phase contained FeO, MnO, MgO, and CaO, suggesting it is a refractory oxide solid solution (e.g., a phase indistinguishable from Wüstite by XRD). The proportion of each phase in the slag (by volume) is shown in Table 2. Vanadium was present in

Table 2. Point Counting Analysis of Phase Distribution (% by Volume) in the Unweathered Slag and the Altered Surface Regions

phases	unweathered slag	altered region aerated conditions ^a	altered region air-excluded conditions
Ca ₂ SiO ₄	57 ± 3	n. d.	n. d.
Ca–Si–H	n.d.	64 ± 3	63 ± 3
wüstite	21 ± 3	20 ± 3	20 ± 3
Ca ₂ (Fe,Al) ₂ O ₅	13 ± 3	10 ± 3	14 ± 3
lime	8 ± 2	n.d.	n. d.
Ca–Si–H/Fe–O	n.d.	6 ± 2	4 ± 2
total counts	1012	920	848

^aWhere present, the CaCO₃ layer was excluded from this analysis. n.d., not detected.

only the dicalcium silicate (0.44 ± 0.23 wt %) and the dicalcium aluminoferrite phase (1.14 ± 0.14 wt %) and not detectable in the free lime and Wüstite phases.

SEM imaging of experimental blocks showed the presence of a compositionally distinct altered region at the block surface that was absent in unweathered samples (Figure 1; SI Figure S5). EDS analysis showed that this region was depleted in both Ca and Si. High resolution imaging showed that dicalcium silicate is depleted and free lime is absent, but the refractory oxide and dicalcium aluminoferrite phases appear largely unaltered (Table 2). A low density Ca and Si containing phase (Ca/Si ratio of 2.1 ± 0.4) is observed in this region, the composition of which is consistent with calcium silicate hydrate phases (Ca–Si–H; SI Figure S6).^{27,28} Occasional blade-like morphology is consistent with Ca–Si–H(II), which has an imperfect Jennite-like structure and a Ca/Si ratio in the range 1.5–2.2.^{29,30} This Ca–Si–H phase also contained V (0.70 ± 0.57 wt % SI Table S2), Fe and P (SI Figure S1f). The

thickness of this altered region was 38 ± 11 ($n = 92$) and 45 ± 14 μm ($n = 76$) in the aerated and air-excluded tests, respectively, and this difference is statistically significant (Mann–Whitney U , $p = <0.001$). Blocks from the aerated experiment had an additional continuous 10–30 μm layer outside the altered region, which consisted of blocky crystals that contained principally Ca, C, and O with trace P consistent with precipitation of CaCO₃ (Figure 1, SI Figure S1g).

Leachate Composition. The pH values and the concentration of key elements in the leachate after 6 months are shown in Table 3. Both leachates were dominated by Ca and Si.

Table 3. Leachate Composition Determined after Six Months in the Aerated and Air-Excluded Slag Leaching Experiments

	Aerated	Air-excluded
pH	8.0	11.9
Major Ions (mg L ⁻¹)		
Ca	23.5	85.2
Si	23.4	29.5
Mg	0.1	0.1
K	0.2	0.4
Na	1.7	2.4
Minor Ions (μg L ⁻¹)		
Al	<2	390
Cr	6.5	9.6
Fe	122.7	251.3
Li	<0.1	<0.1
Mn	8.5	13.1
V	859.1	492.8

The pH values of the leachate from the aerated and air-excluded systems were 8.0 and 11.9, and V concentrations were 859 μg L⁻¹ and 493 μg L⁻¹, respectively.

μXANES Analysis. Representative XANES spectra for each V-bearing phase in experimental samples and standards are shown in Figure 2a. Vanadium K-edge μXANES spectra ($n = 49$) collected from all phases present have a prominent pre-edge peak at 5470 eV (± 0.25 eV). Normalized intensity (± 0.10) of the pre-edge peak for spectra collected from V-bearing phases range from 0.36 to 1.00 in dicalcium silicate, 0.17 to 1.00 in dicalcium aluminoferrite, and 0.61 to 0.94 in the Ca–Si–H (Figure 2b). The main absorption edge ($E_{1/2}$, the point at which absorption reaches 50% of normalized absorption) varied from 5479.0 to 5482.3 eV in dicalcium silicate, 5478.9 to 5482.3 eV in dicalcium aluminoferrite and from 5480.1 to 5482.2 eV in Ca–Si–H (Figure 2b).

DISCUSSION

Reactivity of Phases during Weathering. The development of a compositionally distinct region at the surface of the blocks shows alteration of slag phases has taken place during the six-month leaching experiments. SEM imaging and EDS analyses show depletion of dicalcium silicate and complete dissolution of free lime phases in this altered region, hence these must be considered the reactive phases during slag weathering (eqs 1 and 2). The Fe-rich phases (dicalcium aluminoferrite and refractory oxide) showed no evidence of alteration over the time period of the experiments. The thickness of the altered region was significantly greater in air-excluded samples than aerated equivalents, indicating that the presence or absence of air is a significant factor contributing to

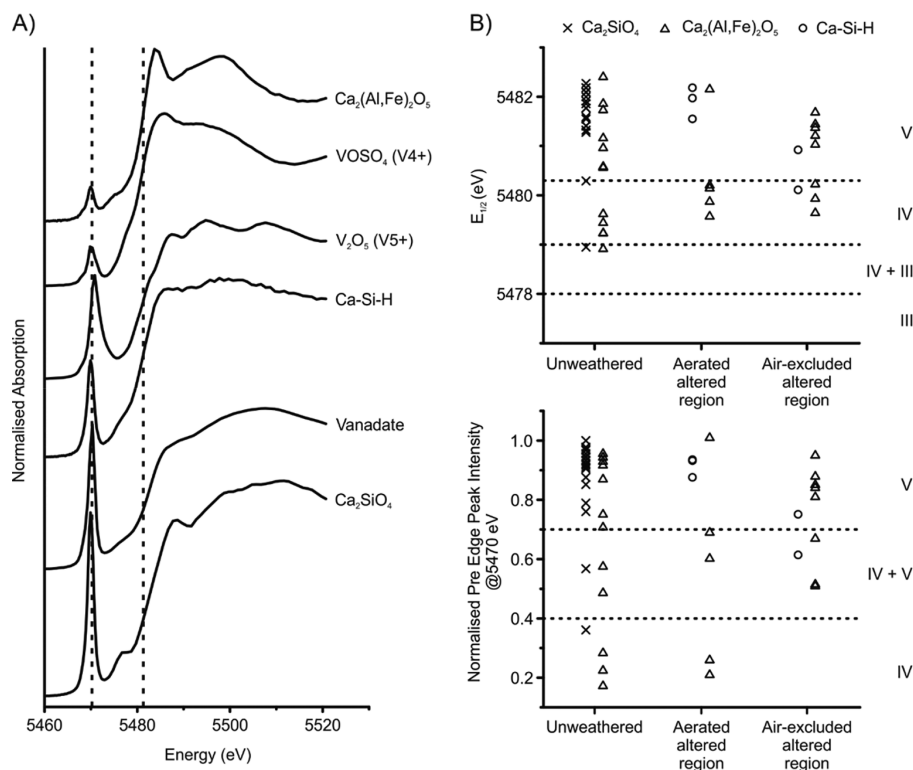


Figure 2. (A) Representative V K-edge μ XANES spectra collected from V-containing slag phases and standards; and (B) $E_{1/2}$ position and normalized pre-edge peak height intensity determined from all data collected from slag blocks.

the rate and overall extent of altered region formation on short time-scales.

Secondary Phase Formation Ca–Si–H and CaCO₃.

Dissolution of dicalcium silicate in the slag blocks released Ca and Si to solutions, which results in precipitation of a Ca–Si–H phase (eq 3) in place of dicalcium silicate in the altered region under both aerated and air-excluded conditions. Low elemental totals from EDS spot analyses (SI Table S2) of Ca–Si–H phases represent areas with high volumes of carbon-rich resin (as carbon is not determined in EDS analysis). This indicates that Ca–Si–H has a porous structure which will allow diffusion of water and ions through the altered region. Thus, it is likely that dicalcium silicate dissolution switched from initially solubility limited to a diffusion limited process as the altered region developed (i.e., the rate of removal of Ca and Si from the slag surface controls rate of weathering). Therefore, formation of Ca–Si–H may have an armoring effect on slag, slowing the rate of dicalcium silicate weathering. Pseudomorphs of lime were also found in the altered region, containing Ca, Si, Fe, Mn, and O (SI Figure S1). This may represent a distinct Fe(Mn)-substituted Ca–Si–H phase or coprecipitated Ca–Si–H and Fe(Mn) spinel phases. Formation of CaCO₃ is only observed in aerated experiments, as it requires the in-gassing of atmospheric CO₂ to allow aqueous Ca to precipitate.¹⁹ Such in-gassing consumes OH[−], which reduces the pH (eq 4) and significantly lowers the Ca concentration in the aerated leachate.

Si was used to track elemental mass balance during the replacement of dicalcium silicate by an approximately equal volume of Ca–Si–H (Table 2). Comparing the mean Si concentration found within the dicalcium silicate phase (13.2 ± 0.7 wt %; SI Table S2) with that found within the Ca–Si–H phase (4.7 ± 2.2 wt %) indicates that only 36 ± 22% of the Si

present in the original dicalcium silicate phase was retained in the Ca–Si–H Layer. A mass balance using Ca concentrations produces a similar result (33 ± 18%; SI Table S2). Thus, during weathering of dicalcium silicate in these experiments, very approximately one-third of the weathered Si (and Ca) was retained as Ca–Si–H and two-thirds was released as ions to solution. The Si found in the 2 L solution at the end of the experiments (47 and 59 mg; Table 3) equates to approximately 4.5 or 5.6% of the total Si present in the original 2 × 8 g blocks in the aerated and air-excluded experiments, respectively (i.e., the slag contained 6.5 ± 1.6 wt % Si; SI Table S1). If the Si found in solution is assumed to represent two-thirds of the original dicalcium silicate that was weathered, then as much as 6.7 or 8.4% of the dicalcium silicate in the blocks was involved in the weathering reaction. The volume of the alteration layer calculated from thickness measurements (38 mm³, aerated; 45 mm³, air-excluded) equates to only 1.9 or 2.3% of the total block volume (2000 mm³). This considerable discrepancy indicates that the reaction must have involved weathering of dicalcium silicate via the internal porosity (BOF slag has high porosity of 4–6%³¹) and along fractures.

V Speciation, Behavior, and Controls on Solubility.

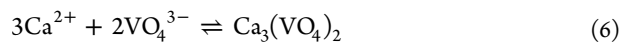
The position of the main absorption edge ($E_{1/2}$) and the normalized pre-edge peak intensity determined from V K-edge XANES spectra can be used to define V oxidation state.³² Spectra collected from the BOF slag samples indicate that V is present as either V(IV) or V(V) (Figure 2b). Vanadium is present throughout the dicalcium silicate phase as V(V) in tetrahedral co-ordination²² with just one spectrum displaying characteristics of V(IV); however, this was taken from a region of high V concentration and may not be representative of the bulk phase. In the dicalcium aluminoferrite phase V is present as both V(IV) in octahedral co-ordination²² and V(V) in

tetrahedral co-ordination. Both oxidation states can be accommodated in dicalcium aluminoferrite because it contains octahedral Fe(III) sites into which V(IV) can readily substitute (due to similar size and charge) and tetrahedral Al sites into which V(V) substitutes.³³ No V(III) was detected within the slag.

Spectra from the neo-formed Ca–Si–H phase generally show tetrahedral V(V) with only one exception of V(IV). Ca–Si–H phases, such as dicalcium silicate, contain tetrahedral Si sites which can easily accommodate the tetrahedral vanadate ions, but the phases do not contain any octahedral anion sites.³⁴ The presence of V(V) in Ca–Si–H suggests that some of the vanadate released to solution by dicalcium silicate dissolution has been reincorporated into Ca–Si–H.

XANES spectra collected from BOF slag show little, if any depletion of V(IV) in the altered region. Also, the small quantities of V(IV) that have been observed in the dicalcium silicate phase are unlikely to be sufficient to significantly contribute to V release. Hence, the results do not support oxidation of V(IV) to V(V) as a mechanism contributing to enhanced vanadium leaching under aerated conditions, a scenario which would require significant dissolution of dicalcium aluminoferrite (the principal host phase for V(IV)), which is not observed. Thus, over time scales measured in months, it is proposed that essentially all V released to solution must originate from the dicalcium silicate phase as V(V), which is predicted to be soluble as aqueous vanadate species at the measured solution pH.^{35,36}

Dissolution of 6–8% of the dicalcium silicate present in the original 8 g blocks would produce a calculated maximum V concentration in solution of approximately 12 mg L⁻¹. However, total V present in solution is less than 10% of that value. The Ca–Si–H phase has taken up some of the V released, but due to the relatively poorly ordered nature of Ca–Si–H phases³⁷ this uptake is expected to be unselective, with V incorporation approximately stoichiometric with the V/Si ratio in solution at the time of formation. However, the proportion of Si released by dicalcium silicate dissolution that remains in solution was proportionally much greater than V (~65% vs <10%; see Discussion above). Also aqueous V concentrations were much higher in the aerated test, despite evidence that total dicalcium silicate dissolution was probably ~20% lower in this test. Therefore, aqueous V concentrations are not well explained by uptake to the Ca–Si–H phase alone. Previous modeling of V solubility in BOF leachates has highlighted the role of calcium vanadate phases in controlling V concentration,^{8,20,38,39} with Ca₃(VO₄)₂ (log K_{sp} = -17.97) identified as the relevant phase at high pH.



Therefore, the maximum possible aqueous V concentration will be inversely proportional to the aqueous Ca²⁺ concentration. The variation in V seen under different experimental conditions (Figure 3) can be explained by the different phases that control the aqueous Ca²⁺ concentration. Under air-excluded conditions, equilibrium with Ca–Si–H phases will permit relatively high aqueous Ca²⁺ concentrations to develop, which result in vanadate concentrations either at or very close to the solubility limit of Ca₃(VO₄)₂ which limits the concentration of vanadate in solution. Under aerated conditions the presence of atmospheric CO₂ leads to the formation of CaCO₃, providing an additional sink for aqueous Ca. Under these conditions, much higher V concentrations are found in

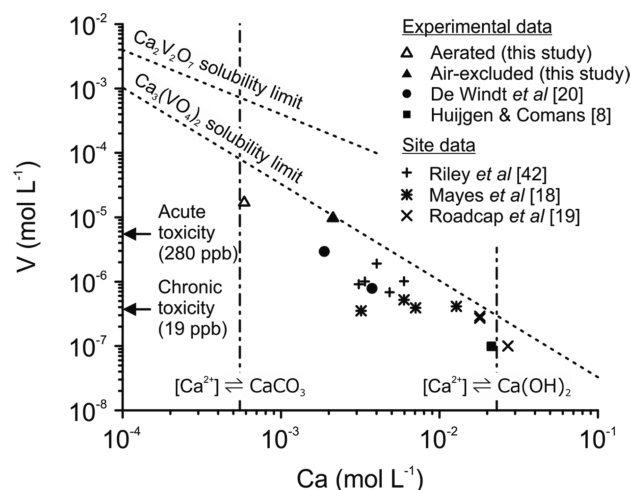


Figure 3. Plot of [V] versus [Ca] for selected experimental and site data (site data from refs 18, 19, and 42). Dashed lines marks the solubility limits for Ca₃(VO₄)₂ and Ca₂V₂O₇ at 20 °C.⁴⁵ Data plotting below the solubility limit is undersaturated with respect to that phase. Vertical dashed lines indicate [Ca] in solutions in equilibrium with calcite in contact with atmospheric CO₂ or with Ca(OH)₂, respectively (both at 20 °C). Horizontal arrows indicate acute and chronic freshwater toxicity guideline limits⁴³

solution, which in our experiments were still under-saturated with respect to Ca₃(VO₄)₂. As there is still dicalcium silicate available in the blocks, this indicates that the leachate composition is limited by kinetic effects related to slower dissolution of dicalcium silicate, partially protected by Ca–Si–H in the altered region. In addition, calcium pyrovanadate (Ca₂V₂O₇) solubility (log K_{sp} = -12.0) and surface complexation reactions involving sorption to solids have been suggested as important in controlling V concentrations at pH < 9.5.^{8,38} In the aerated tests, however, where pH was 8.0, V concentrations were broadly consistent with Ca₃(VO₄)₂ solubility limits, and the data presented do not indicate that other phases or surface sorption processes were important in these tests.

Implications for Slag Weathering, Use, and Storage.

Heap leaching of BOF slag by rainfall inevitably occurs during storage in large land-based repositories, and is often actively promoted to reduce the free lime content of BOF slag to permit its beneficial reuse. During the early stages of heap leaching free lime will be relatively abundant due to the high solid/solution ratios present (8–10 kg L⁻¹). Aqueous CO₂ species in the rainwater (from contact with atmosphere) will precipitate rapidly as it enters the waste, so Ca concentrations will be controlled largely by Ca(OH)₂ equilibrium, producing highly alkaline, Ca-rich, leachates with corresponding low V concentrations (Figure 3.). However, the concentration of other trace metals solubilized at high pH (e.g., Al, Fe; Table 1) will potentially be maximized by these conditions.

In contrast, most lab-based leaching tests are performed at much lower solid/solution ratios (e.g., 0.01–0.1 kg L⁻¹; this study,²⁰). In such leaching tests the free lime phase can be exhausted. Thus, under air-excluded conditions, the Ca concentrations are controlled primarily by the balance of kinetic processes involving dicalcium silicate dissolution and equilibrium processes involving Ca–Si–H precipitation. Typically this produces order of magnitude lower Ca concentrations than found in Ca(OH)₂ equilibrated water and correspondingly higher V concentrations due to the inverse

relationship between V and Ca concentrations implied by $\text{Ca}_3(\text{VO}_4)_2$ solubility limit. Further, aerated leaching tests are often conducted to investigate the leaching end-point when the slag reaches equilibrium with CO_2 species in the influent rainwater, although this will only occur on extremely long time scales in real waste heaps. Under aerated conditions, Ca concentrations are controlled by equilibrium with secondary CaCO_3 precipitates that typically have low solubility (e.g., calcite $\text{Log } K_{\text{sp}} = -8.44$ ⁴⁰) producing solutions with relatively low Ca concentrations. In this situation, much higher V concentrations are predicted (Figure 3).

One important implication is that these results may represent the sequence of slag leaching expected over time: first $\text{CaO}/\text{Ca}(\text{OH})_2$ dominated systems with low V concentrations; then calcium silicate/Ca–Si–H dominated systems with higher V concentrations; and finally CaCO_3 dominated systems with the potential for very high V concentrations. However, pH decrease is associated with depletion of reactive V-containing calcium silicate phases (or, more accurately, the availability of these phases for dissolution as particle surfaces become protected by reaction products). Therefore, in a heap leaching situation in which the pore water is continually replaced, V release is kinetically limited and V concentrations are very unlikely to reach the solubility limit of calcium vanadate.

Release of V may also be influenced by the stability of secondary phases incorporating V (i.e., Ca–Si–H) as well as long-term (>6 month) stability of V incorporated into the less reactive dicalcium aluminoferrite phase. It has been suggested that in general these phases become increasingly soluble if the pH of their environment falls over time.⁴¹ A comparison of real site leachates also indicates that the heap weathering process can be very slow. Steel slags deposited in the UK and USA all produce high pH leachates that are largely dominated by $\text{Ca}(\text{OH})_2$ derived alkalinity and hence have low V concentrations (Figure 3^{18,19,42}). Monitoring of leachates from BOF slag deposited at Consett U.K. has shown only modestly reduced alkalinity and Ca concentrations over 36 years since closure, leading to only slightly elevated V concentrations (compared to younger systems).^{18,42} Nevertheless, it should be noted that V concentrations in site leachates often exceed chronic toxicity thresholds ($19 \mu\text{g L}^{-1}$)⁴³ and that this work indicates that a reducing trend in alkalinity and Ca concentrations over time may not necessarily correspond to a reducing trend in V concentrations.

Overall, the presence of an altered region, and additional CaCO_3 precipitate has positive implications for slag after-uses (e.g., as an aggregate) as the presence of an alteration rind may limit (or significantly slow) further dissolution, preventing significant alkalinity generation or metal leaching. On the other hand, calculations of the CO_2 capture potential of BOF slag (often based on the reactivity of crushed powder samples or theoretical maximums based on whole mass conversion⁴⁴) may overestimate both the total extent and the rates of carbonation observed in real-life situations.

■ ASSOCIATED CONTENT

■ Supporting Information

The Supporting Information is available free of charge on the ACS Publications website at DOI: 10.1021/acs.est.7b00874.

Detailed SEM and XAS methods, EDS map and spectra, XRD plot, additional SEM images and SEM and XRF data (PDF)

■ AUTHOR INFORMATION

Corresponding Author

*Phone: +44 113 3437532; fax: +44 113 3435259; e-mail: i.t.burke@leeds.ac.uk.

ORCID

Andrew J. Hobson: 0000-0002-3618-0096

Andrew W. Bray: 0000-0001-5399-6647

Ian T. Burke: 0000-0002-0484-568X

Notes

The authors declare no competing financial interest.

■ ACKNOWLEDGMENTS

This research was funded by a U.K. Natural Environment Research Council Ph.D. studentship to A.J.H. and U.K. NERC Grant NE/L01405X/1. We thank Diamond Light Source for access to beamline I18 (Grant SP12696) that contributed to the results presented here. We thank Tina Geraki and Fred Mosselmans (Diamond Light Source) for support during synchrotron time, and Andy Connelly, Lesley Neve, Stephen Reid, Richard Walshaw, and Duncan Hedges (all University of Leeds) for lab assistance, XRD, ICP-OES/MS, and SEM analysis, respectively.

■ REFERENCES

- (1) Smil, V. *Transforming the Twentieth Century: Technical Innovations and Their Consequences*; Oxford University Press on Demand, 2006; Vol. 2.
- (2) Engineering Employers Federation. *UK Steel Key Stats Guide 2016*. <https://www.eef.org.uk/uk-steel/about-uk-steel> (accessed Jun 8 2017).
- (3) Yildirim, I. Z.; Prezzi, M. Chemical, Mineralogical, and Morphological Properties of Steel Slag. *Adv. Civil Eng.* **2011**, *2011*, 1–13.
- (4) Ober, J. A. *Mineral Commodity Summaries 2016*; US Geological Survey, 2016.
- (5) Ahmedzade, P.; Sengoz, B. Evaluation of steel slag coarse aggregate in hot mix asphalt concrete. *J. Hazard. Mater.* **2009**, *165* (1–3), 300–305.
- (6) *A Guide to the Use of Iron and Steel Slag in Roads*; Australasian Slag Association, 2002; p 58. ISBN 0 9577051.
- (7) Huijgen, W. J. J.; Comans, R. N. J. Mineral CO_2 Sequestration by Steel Slag Carbonation. *Environ. Sci. Technol.* **2005**, *39* (24), 9676–9682.
- (8) Huijgen, W. J. J.; Comans, R. N. J. Carbonation of steel slag for CO_2 sequestration: Leaching of products and reaction mechanisms. *Environ. Sci. Technol.* **2006**, *40* (8), 2790–2796.
- (9) Bobicki, E. R.; Liu, Q.; Xu, Z.; Zeng, H. Carbon capture and storage using alkaline industrial wastes. *Prog. Energy Combust. Sci.* **2012**, *38* (2), 302–320.
- (10) Doucet, F. J. Effective CO_2 -specific sequestration capacity of steel slags and variability in their leaching behaviour in view of industrial mineral carbonation. *Miner. Eng.* **2010**, *23* (3), 262–269.
- (11) Motz, H.; Geiseler, J. Products of steel slags an opportunity to save natural resources. *Waste Manage.* **2001**, *21* (3), 285–293.
- (12) Euroslag. *Statistics 2012*. <http://www.euroslag.com/products/statistics/2012/> (accessed Jun 8, 2017).
- (13) Shen, D. H.; Wu, C. M.; Du, J. C. Laboratory investigation of basic oxygen furnace slag for substitution of aggregate in porous asphalt mixture. *Constr. Build. Mater.* **2009**, *23* (1), 453–461.
- (14) Tossavainen, M.; Engstrom, F.; Yang, Q.; Menad, N.; Lidstrom Larsson, M.; Bjorkman, B. Characteristics of steel slag under different cooling conditions. *Waste Manage.* **2007**, *27* (10), 1335–1344.
- (15) Piatak, N. M.; Parsons, M. B.; Seal, R. R. Characteristics and environmental aspects of slag: A review. *Appl. Geochem.* **2014**, *57*, 236.

- (16) Navarro, C.; Diaz, M.; Villa-Garcia, M. A. Physico-Chemical Characterization of Steel Slag. Study of its Behavior under Simulated Environmental Conditions. *Environ. Sci. Technol.* **2010**, *44* (14), 5383–5388.
- (17) Chaurand, P.; Rose, J.; Domas, J.; Bottero, J.-Y. Speciation of Cr and V within BOF steel slag reused in road constructions. *J. Geochem. Explor.* **2006**, *88* (1–3), 10–14.
- (18) Mayes, W. M.; Younger, P. L.; Aumonier, J. Hydrogeochemistry of alkaline steel slag leachates in the UK. *Water, Air, Soil Pollut.* **2008**, *195* (1–4), 35–50.
- (19) Roadcap, G. S.; Kelly, W. R.; Bethke, C. M. Geochemistry of extremely alkaline (pH > 12) ground water in slag-fill aquifers. *Groundwater* **2005**, *43* (6), 806–816.
- (20) De Windt, L.; Chaurand, P.; Rose, J. Kinetics of steel slag leaching: Batch tests and modeling. *Waste Manage.* **2011**, *31* (2), 225–235.
- (21) Proctor, D. M.; et al. Physical and chemical characteristics of blast furnace, basic oxygen furnace, and electric arc furnace steel industry slags. *Environ. Sci. Technol.* **2000**, *34* (8), 1576–1582.
- (22) Chaurand, P.; Rose, J.; Briois, V.; Olivi, L.; Hazemann, J.-L.; Proux, O.; Domas, J.; Bottero, J.-Y. Environmental impacts of steel slag reused in road construction: A crystallographic and molecular (XANES) approach. *J. Hazard. Mater.* **2007**, *139* (3), 537–542.
- (23) Barceloux, D. G. Vanadium. *J. Toxicol., Clin. Toxicol.* **1999**, *37* (2), 265–78.
- (24) Environment Agency. EA Bespoke permit 2014 Permit for Scunthorpe Aggregate processing. *Permit number EPR/LP3537VV/A001*, 2014.
- (25) Plas, L.v.d.; Tobi, A. C. A chart for judging the reliability of point counting results. *Am. J. Sci.* **1965**, *263* (1), 87–90.
- (26) Ravel, B.; Newville, M. ATHENA, ARTEMIS, HEPHAESTUS: data analysis for X-ray absorption spectroscopy using IFEFFIT. *J. Synchrotron Radiat.* **2005**, *12* (4), 537–41.
- (27) Allen, A. J.; Thomas, J. J.; Jennings, H. M. Composition and density of nanoscale calcium-silicate-hydrate in cement. *Nat. Mater.* **2007**, *6* (4), 311–316.
- (28) Richardson, I. G. The nature of C-S-H in hardened cements. *Cem. Concr. Res.* **1999**, *29* (8), 1131–1147.
- (29) Gard, J. A.; Taylor, H. F. W. Calcium silicate hydrate (II) (“C-S-H(II)”). *Cem. Concr. Res.* **1976**, *6* (5), 667–677.
- (30) Chen, J. J.; Thomas, J. J.; Taylor, H. F. W.; Jennings, H. M. Solubility and structure of calcium silicate hydrate. *Cem. Concr. Res.* **2004**, *34* (9), 1499–1519.
- (31) Wu, S.; Xue, Y.; Ye, Q.; Chen, Y. Utilization of steel slag as aggregates for stone mastic asphalt (SMA) mixtures. *Build. Environ.* **2007**, *42* (7), 2580–2585.
- (32) Chaurand, P.; et al. New methodological approach for the vanadium K-edge X-ray absorption near-edge structure interpretation: Application to the speciation of vanadium in oxide phases from steel slag. *J. Phys. Chem. B* **2007**, *111* (19), 5101–5110.
- (33) Colville, A. A.; Geller, S. The crystal structure of brownmillerite, Ca₂FeAlO₅. *Acta Crystallogr., Sect. B: Struct. Crystallogr. Cryst. Chem.* **1971**, *27* (12), 2311–2315.
- (34) Taylor, H. F. W. *Cement Chemistry*; Thomas Telford, 1997.
- (35) Peacock, C. L.; Sherman, D. M. Vanadium(V) adsorption onto goethite (alpha-FeOOH) at pH 1.5 to 12: A surface complexation model based on ab initio molecular geometries and EXAFS spectroscopy. *Geochim. Cosmochim. Acta* **2004**, *68* (8), 1723–1733.
- (36) Wehrli, B.; Stumm, W. Vanadyl in Natural-Waters – Adsorption and Hydrolysis Promote Oxygenation. *Geochim. Cosmochim. Acta* **1989**, *53* (1), 69–77.
- (37) Taylor, H. F. W. Nanostructure of C-S-H: Current status. *Adv. Cem. Based Mater.* **1993**, *1* (1), 38–46.
- (38) Schindler, M.; Hawthorne, F. C.; Baur, W. H. A Crystal-Chemical Approach to the Composition and Occurrence of Vanadium Minerals. *Can. Mineral.* **2000**, *38* (6), 1443–1456.
- (39) Cornelis, G.; Johnson, C. A.; Van Gerven, T.; Vandecasteele, C. Leaching mechanisms of oxyanionic metalloid and metal species in alkaline solid wastes: A review. *Appl. Geochem.* **2008**, *23* (5), 955–976.
- (40) Lide, D. R. *CRC Handbook of Physics and Chemistry*; CRC Press, 2001.
- (41) Engström, F.; Adolfsson, D.; Samuelsson, C.; Sandström, Å.; Björkman, B. A study of the solubility of pure slag minerals. *Miner. Eng.* **2013**, *41*, 46–52.
- (42) Riley, A. L.; Mayes, W. M. Long-term evolution of highly alkaline steel slag drainage waters. *Environ. Monit. Assess.* **2015**, *187* (7), No. 4693-1, DOI: 10.1007/s10661-015-4693-1.
- (43) Buchman, M. F. S. W. *NOAA Screening Quick Reference Tables*; Office of Response and Restoration Division, National Oceanic and Atmospheric Administration: Washington, DC, 2006; p 34.
- (44) Renforth, P.; Washbourne, C.-L.; Taylder, J.; Manning, D. A. C. Silicate Production and Availability for Mineral Carbonation. *Environ. Sci. Technol.* **2011**, *45* (6), 2035–2041.
- (45) Allison, J. D.; Brown, D. S.; Novo-Gradac, K. J. *MINTEQA2/PRODEFA2, a Geochemical Assessment Model for Environmental Systems*, version 3.0 user’s manual; Environmental Research Laboratory, Office of Research and Development, US Environmental Protection Agency, 1991.